

Dau' thau dey: Nüz a bund

AM, I 637  
J.H. Conrad 3

Getragen

Handwritten musical score for the first system. It consists of four staves: two vocal staves and two piano accompaniment staves. The key signature is three flats (B-flat, E-flat, A-flat) and the time signature is 6/8. The lyrics are: "Hüt s'kim A bund wuden will, in".

Handwritten musical score for the second system. It consists of four staves: two vocal staves and two piano accompaniment staves. The key signature is three flats and the time signature is 6/8. The lyrics are: "al-te bann hin ein steht noch der Frühlings tag still, und der La:".

Handwritten musical score for the third system. It consists of four staves: two vocal staves and two piano accompaniment staves. The key signature is three flats and the time signature is 6/8. The lyrics are: "ter neu-für= kalde Reihn zu: hen ein te: ten".



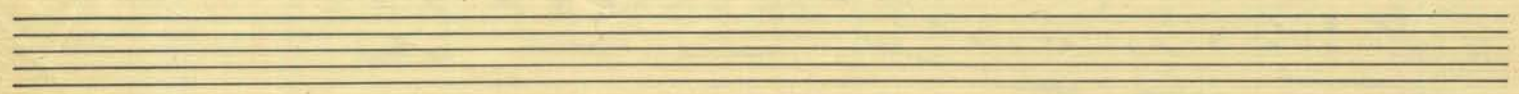
S Ta - ges stein in in die Halle des Himmels hi - min scht

A la - tan Voi - ges - Himm - nis in die Halle des Him - mels hi - min

S — und es glän - zen in im braun — die Steine der Straße mit

blau

der Tag will den Stein nicht verlassen er will ihn kat





Handwritten musical score for the first system. It consists of a vocal line and a piano accompaniment. The vocal line has lyrics: "mit der Menschen da ni be je". The piano accompaniment features a complex rhythmic pattern with triplets and sixteenth notes.

Handwritten musical score for the second system. The vocal line includes lyrics: "sein sein die Menschen zu sein und mit gleich henden, glücklichen". The piano accompaniment continues with similar rhythmic patterns and includes some dynamic markings like 'p'.

Handwritten musical score for the third system. The vocal line has lyrics: "Wangen, mit fließ henden Wan gen". The piano accompaniment concludes the piece with a final cadence and some triplet figures.

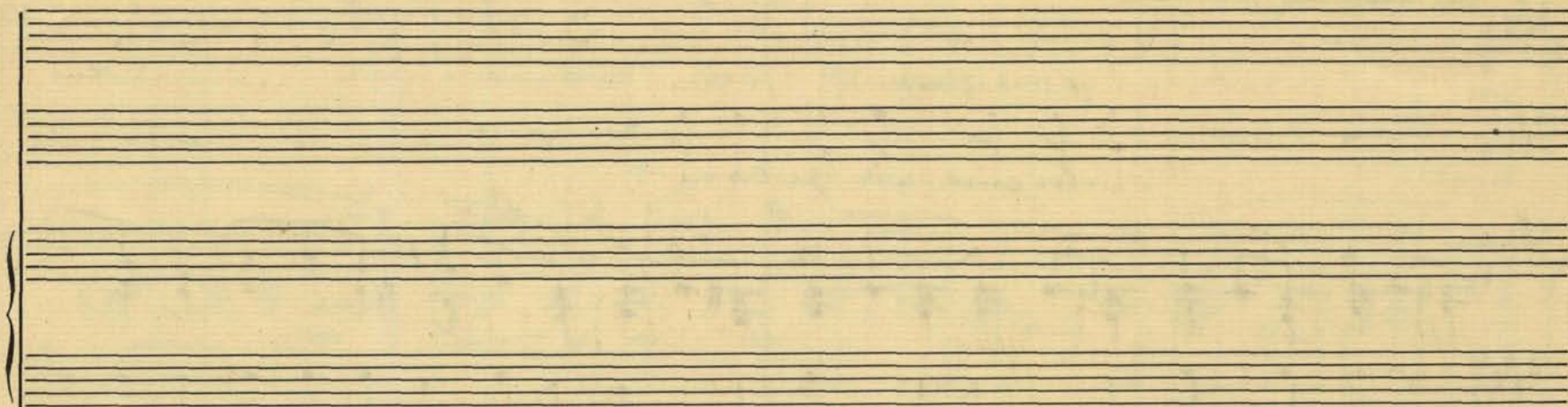


Handwritten musical score for piano, measures 1-8. The score is written on a grand staff with treble and bass clefs. The key signature is B-flat major (two flats). The music features a complex texture with many beamed notes and chords. Measure 1 starts with a treble clef and a key signature of two flats. Measures 2-8 continue with dense chordal and melodic patterns. There are some corrections and scribbles in the later measures, particularly in measure 8.

Handwritten musical score for piano, measures 9-12. This section continues the piece with similar dense textures. Measures 9 and 10 show a continuation of the melodic and harmonic ideas. Measures 11 and 12 conclude the section with a final chord and some decorative flourishes. The notation is somewhat messy, with some overlapping lines and corrections.

Seven sets of empty musical staves, each consisting of a grand staff (treble and bass clefs). These staves are completely blank and occupy the lower half of the page.

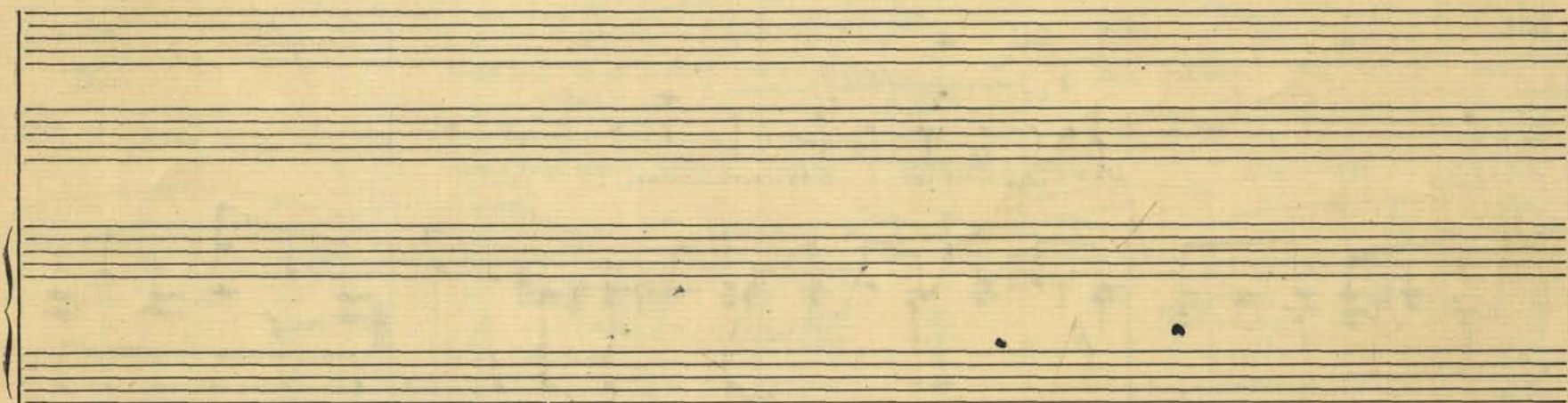
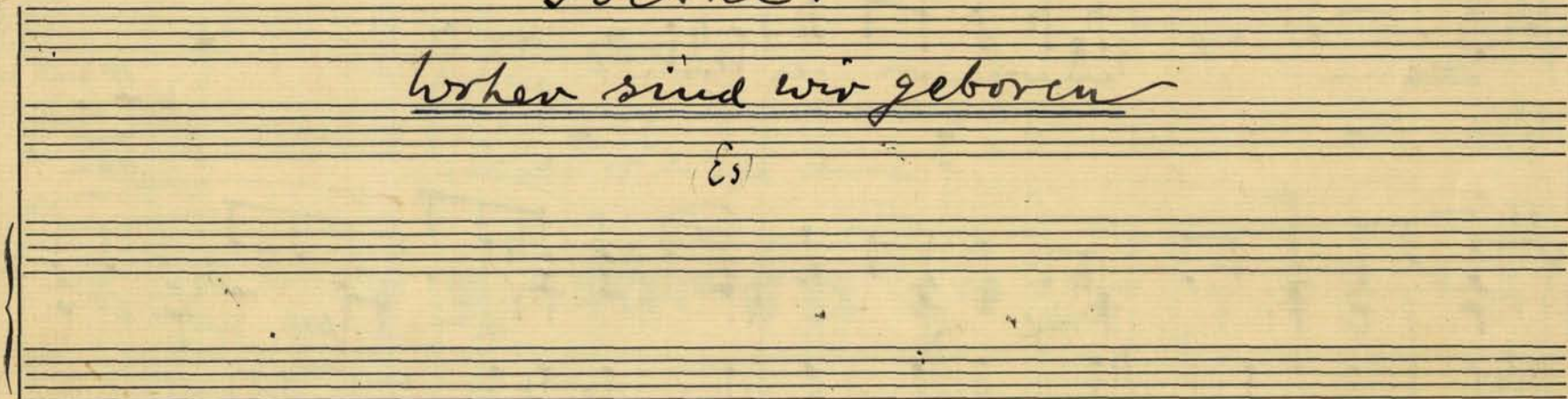




Goethe:

Woher sind wir geboren

(Es)





Den Ausdruck ständig wechselnd  
beim mittleren Zeitmaß.

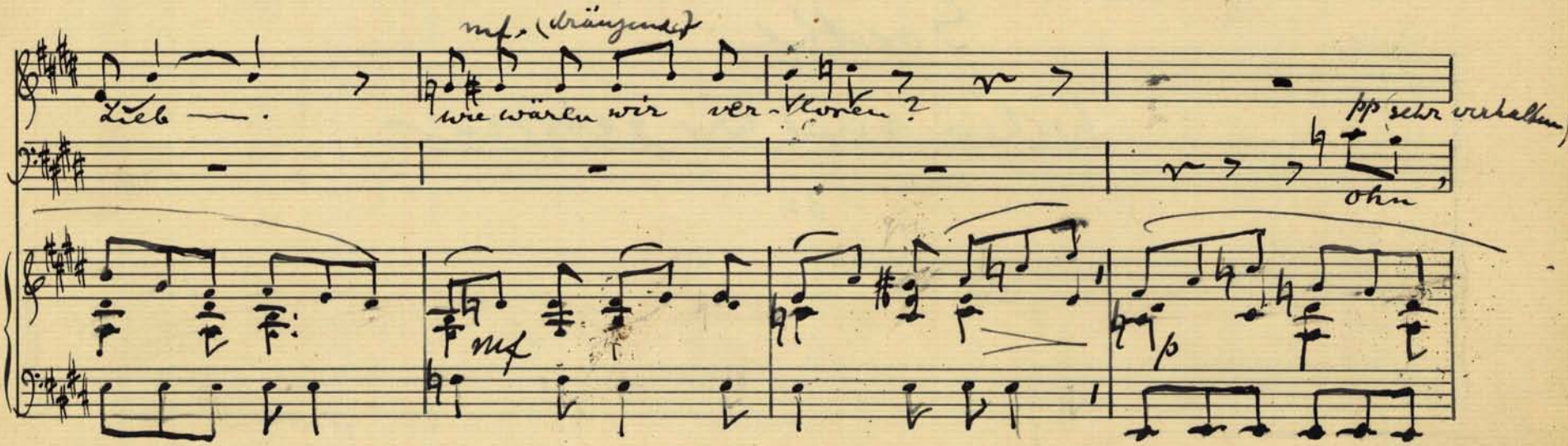
*p* (verhalten)

Aus  
Wahr sind wir geboren?



*mf* (drängend)

Lieb —  
wie wären wir verstorben?  
*pp* sehr verhalten  
Ohn



*p* (zuwecklich)

Lieb  
Was hilft uns überwinden?  
*f*  
Die





*(cresc.)*  
 Lieb — kann — man auch Liebe finden?  
*mf*  
 durch

*accel.*  
*string*  
*dim.*  
*cal.*

*p dolce*  
 Lieb. Was lässt nicht lange weinen?  
*die*

*p dolce*  
*cal. pp*  
*pp*  
*dolce*

*cresc. e accel.*  
 Lieb. Was soll uns stets ver-einen?  
*cresc.*  
 die Lieb, die Lieb, die Lieb  
 Was soll uns stets ver-einen? du Lieb

*giz*  
*p*  
*cresc. e accel.*  
*mpreso*

*breit und bestimmt.*  
 Lieb. die Lieb.  
 die Lieb, die Lieb.

*riten*  
*poco acc.*  
*deciso.*

Jan 1729  
 7937  
 Sept 1935