

2

Goethe

Hoffnung

J. H. Wetzel

Kraftvoll

Handwritten musical notation for the first system. The vocal line (treble clef) begins with a C-clef and a common time signature. It features a series of notes with stems, including a triplet of eighth notes. The piano accompaniment (grand staff) starts with a C-clef and a common time signature, featuring a triplet of eighth notes in the right hand and a steady bass line in the left hand. Dynamics include *f* and *mf*.

Schaff,

Schaff,

das Tag-werk meiner

Handwritten musical notation for the second system. The vocal line continues with notes and rests, marked with *mf*. The piano accompaniment continues with chords and moving lines in both hands.

Hän-de,

ho-hes Hülk, das ich vollen-de.

Handwritten musical notation for the third system. The vocal line concludes with notes and rests, marked with *f*. The piano accompaniment continues with chords and moving lines in both hands, marked with *mf*.

f
 lan, o lan nicht er-mat-ten, kop — mich nicht er-

The first system of the handwritten musical score. It features a vocal line on a single staff and a piano accompaniment on two staves. The vocal line begins with a dynamic marking of *f* and contains the lyrics "lan, o lan nicht er-mat-ten, kop — mich nicht er-". The piano accompaniment consists of chords and moving lines in both hands, with some accidentals like sharps and naturals.

mat — ten. *p* Nein, es sind nicht leere

The second system of the handwritten musical score. The vocal line continues with "mat — ten." and then "Nein, es sind nicht leere". A dynamic marking of *p* is placed above the second phrase. The piano accompaniment continues with similar harmonic structures, including some chromatic movement.

Träu-me, jetzt nur Stangen, die-se Bräu-me, geben

The third system of the handwritten musical score. The vocal line contains the lyrics "Träu-me, jetzt nur Stangen, die-se Bräu-me, geben". The piano accompaniment features a change in texture, with some triplets and a more rhythmic bass line.

mf. einst noch Frucht und Schatten. *p* Nein, es sind nicht leere

The fourth system of the handwritten musical score. The vocal line starts with a dynamic marking of *mf.* and the lyrics "einst noch Frucht und Schatten." followed by "Nein, es sind nicht leere" with a *p* dynamic marking. The piano accompaniment includes a section marked with a 'C' time signature and continues with the harmonic accompaniment.

Handwritten musical score for the first system. The vocal line is on a single staff with the lyrics "Frau - me, setal nur Stangen, diese Bäu - me ge - bon". The piano accompaniment consists of two staves. Above the first measure of the vocal line, there is a handwritten note "nl" with a slur. Above the second measure, there is a handwritten note "at" with "mf" below it. The piano part includes dynamic markings like "mf" and "ff".

Handwritten musical score for the second system. The vocal line continues with the lyrics "einst noch frucht in Schat - ten. Lass, - - - - - dass mich nicht er -". The piano accompaniment features complex textures with triplets and slurs. Above the vocal line, there is a handwritten note "brut" with "f" below it. The piano part includes dynamic markings like "f" and "ff".

Handwritten musical score for the third system. The vocal line has the lyrics "mat - - - - - ten!". The piano accompaniment continues with a dense texture of chords and moving lines. Above the vocal line, there is a handwritten note "mat" with "ten!" below it. The piano part includes dynamic markings like "ff".

Handwritten musical score for the fourth system. This system shows the final vocal line and piano accompaniment. The vocal line has some notes but no lyrics. The piano accompaniment concludes the piece with a final chord. A dynamic marking "mf" is visible at the beginning of the piano part.

Letzte Sehnsucht.

47. 7

Gemessen

p *mf*

Sagt es niemand, nur dem Weisen, weil die

cresc.

Menge gleich verhöhet:

Das Heiland'ge will ich

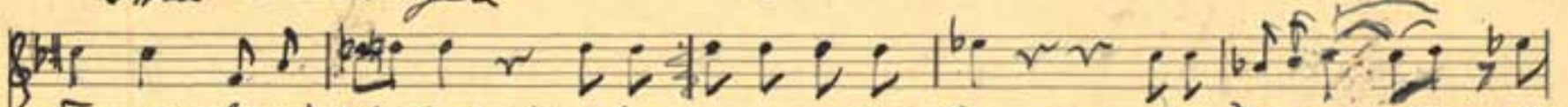
acceler.

sfz

preisen, das noch Fremdentel sich sehnet.

In der

stirn — gen — er — — — — —



Frau macht dich schwierig, Knecht geflohen und gebrannt, und zuletzt ^{als nichts} des Lichts be-



p stirn — gen — er — — — — —

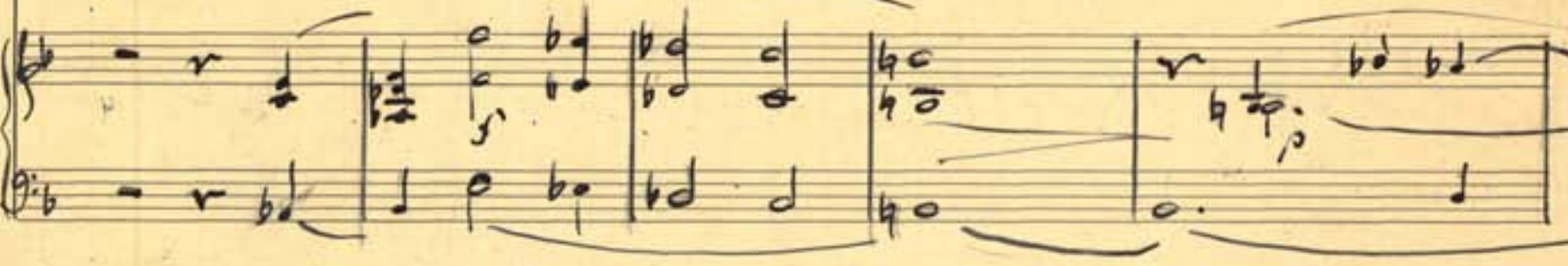


gierig, bist du Schmetterling verbrannt.

Und so



lang du das nicht hast, dieses: Stirb und werde! bist du ein träger



Sist auf der dunklen Erde.



pp

Liebeswäch - te Kückling, die dich züngte, wo du züngtest, über -

pp

pp

füllt die frem - de Fückling, wenn die stille Kerze leuchtet.

p

Nicht wahrst du umfangen ^{im} der Finsteris Kerhat - tung, und dich

p

mf

reißten neu Verlangen auf zu höherer Tragettung. Keine

mf

rit.

rit.

Two blank musical staves, one above the other, with five lines each.

Two blank musical staves, one above the other, with five lines each.

Handwritten musical notation on two staves. The top staff contains a single melodic line with various note values and rests. The bottom staff contains a bass line with notes and rests. There are some annotations and markings between the staves, including a large '2' and some illegible text.

Handwritten musical notation on two staves. The top staff contains a melodic line with notes and rests. The bottom staff contains a bass line with notes and rests. There are some annotations and markings between the staves, including a large '2' and some illegible text.

81-907

Tauer im Wechsel

81

Vollzug

*eilig
mf*

Wiealdi nach den Frück-ten greifen, eilig nimm dein Taldavon!

al

Diese fangen an zu reifen, und die andern Keimansohn;

Gleich mit jedem Regen güene ~~...~~ ändert sich kein holdes Tal,

ach, und in demselben Klüwe schwimmt ^{du} wirst zum zweiten mal.

mittleres Tempo

mf

Hielt diesen frühen Regen, ach, nur Eine Stunde fort! Aber
Vorspiel

mf

ollen Blütenregen schüttelt schon der laue West. Soll ich
der der g

nich des Grünen freuen, dem ich Schatten erst verdankt? Bald wird

Stürm auch das zerstören; wenn es felb im Herbst gedauert.

gato

Jenangs

Du nun selbst! 'Wassfelsenfeste' sieh vor dir hervor-
 gehend, Kauern

siehet die, siehet Paläste stets mit andern Augen an. Weg-ge-
 fahrt

schwimmen ist die Lippe, die im Kusse sonst ganz, jezt

Fuß, der an der Klippe sich mit Sensesprache maß.

ruhig

Jene Hand, die gern und milde sich bewegte wohlge-tüm, das ge-

The first system of the handwritten musical score. It features a vocal line on a treble clef staff and a piano accompaniment on a grand staff (treble and bass clefs). The key signature has two flats (B-flat and E-flat), and the time signature is 4/4. The lyrics are written below the vocal line. Above the vocal line, there are some handwritten notes: 'r!', 's', and 'd'. The piano accompaniment consists of chords and moving lines in both hands.

glicherte Ge-bilde, alles ist ein andres mein. Und was

The second system of the handwritten musical score. It continues the vocal line and piano accompaniment from the first system. The lyrics are written below the vocal line. The piano accompaniment continues with similar harmonic and melodic patterns.

sich an jener Stelle nun mit deinem Namen nennt, kam her-

The third system of the handwritten musical score. It continues the vocal line and piano accompaniment. The lyrics are written below the vocal line. The piano accompaniment continues with similar harmonic and melodic patterns.

bei wie eine Welle, und so sieht's zum Element.

The fourth system of the handwritten musical score. It concludes the vocal line and piano accompaniment. The lyrics are written below the vocal line. The piano accompaniment continues with similar harmonic and melodic patterns. The name 'Gott' is written at the bottom right of the page.

5
feierlich
mf

Las den Anfang mit dem Erde sah in Eins zusammen ziehn! Schneller



als die Gegenstände selber dich vorüber fliehn! Dankte,



das die Günstler Küsen Unvergängliches verheißt: den Ge-



halt in deinem Busen und die Form in deinem Geist.



langsam *ausgesprochen*

mf

Handwritten musical score for the first system. It consists of a vocal line and a piano accompaniment. The vocal line starts with a rest, followed by the lyrics "Sie sangt mit hier". The piano accompaniment features a steady eighth-note pattern in the right hand and a simple harmonic accompaniment in the left hand. Dynamics include *mf* and *pp.*

Handwritten musical score for the second system. The vocal line continues with the lyrics "ra-tri = sies ge-tränke, mu. abge-setzt vom". The piano accompaniment continues with the same rhythmic pattern. A dynamic marking of *mf* is present. A fermata is placed over the final note of the vocal line.

Handwritten musical score for the third system. The vocal line has the lyrics "ersten Zug vor-führt, so fühlt sich wohl, & längst". The piano accompaniment continues. Dynamics include *p* and *mf*.

Handwritten musical score for the fourth system. The vocal line has the lyrics "sind bei ge-len. ke der zarten Beinchen schon". The piano accompaniment continues. Dynamics include *mf*.

- paraly - siert.

p
nicht mehr ge - wandt, die Flügelchen zu putzen,

nicht mehr ge - schlükt, das Köpfchen aufzu - stützen - das

heben so sich im Ge - nuss ver - liert.

zum Stehen kommen - wird noch das

Frei- chen tau- gen; so schließt sie fort, und

vers.

mitten unterm Längem murre- bellt ihr der Tod Sie tau- send

fin.

an- gen

pp

fin.

62

Goethe

Die Schildwache und Freund Hein.

schreitend

Schild wachen
mf (kasti?)
 Wer da?

p non legato *trasc.*

Freund Rein *mf* *string* *Schildwache (kasti?)*

Ich bin Freund Hein. Lass er mich herein!
 Er sieht so

sfz *sfz p* *Schneller* *p qnt*

hager und so bleich, eher einem Toten als einem Leben — dir gleich.

f! *p* *pp.*

mf

Er kommt von Kai — nam gesun — dan

sfz *pp.*

Ort, Zeig mir erst seinen Pässeport

The first system of the handwritten musical score. It features a vocal line on a single staff and a piano accompaniment on two staves. The key signature is three flats (B-flat, E-flat, A-flat) and the time signature is 4/4. The lyrics are "Ort, Zeig mir erst seinen Pässeport". The piano part includes a triplet of eighth notes in the first measure.

Erstes Tempo
p non legato
cresc

The second system of the handwritten musical score. It features a vocal line on a single staff and a piano accompaniment on two staves. The key signature remains three flats. The lyrics are "Erstes Tempo", "p non legato", and "cresc". The piano part includes a triplet of eighth notes in the first measure.

Kein Pass.
Kein Pass ist diese Pense hier

The third system of the handwritten musical score. It features a vocal line on a single staff and a piano accompaniment on two staves. The key signature remains three flats. The lyrics are "Kein Pass." and "Kein Pass ist diese Pense hier". The piano part includes a triplet of eighth notes in the first measure and the word "ritto" written vertically below the bass staff.

Tür, Tor und Tallybaum öffnet sie mir. Nicht hält in meinem raschen Lauf

The fourth system of the handwritten musical score. It features a vocal line on a single staff and a piano accompaniment on two staves. The key signature remains three flats. The lyrics are "Tür, Tor und Tallybaum öffnet sie mir. Nicht hält in meinem raschen Lauf". The piano part includes a triplet of eighth notes in the first measure.

solle eine Armée en fort nicht auf. *p* *Will er ^{welter} ~~wider~~ weiter schikaniieren,*
mit noch weiter



werd ich über ihn wegmarschieren *pp* *Kein lautes Wörtchen mit ihm sprechen, sein' frechen*



Fürwitz an ihm rächen.



Handwritten text at the top of the page, possibly a title or reference number.

111, I 9

zu Bl. 5

3

111, I 9

Pl. 10

111, I 9

zu Bl. 3

60

4 = T.

Goethe

Wandlers Gemütsruhe

Handwritten musical score for voice and piano. The score is divided into two systems. The first system includes a vocal line and a piano accompaniment. The lyrics are: "wollen zum Trübsich erhalten rüft die Arme der Götter herbei, rüft die". The second system includes a vocal line and a piano accompaniment. The lyrics are: "Arme der Götter herbei." The piano part features dynamic markings such as *mf* and *res.*

Beckhommern. Ziemlich langsam.

Musical staff with treble clef and key signature of two flats (B-flat, E-flat). The staff contains several measures of whole rests.

Piano accompaniment for the first system, showing the left and right hands with various chords and melodic lines.

Vocal line with lyrics: "Ernot. Feig' Senden - ken bängli - ches Schwanken,"

Piano accompaniment for the second system, continuing the musical texture.

Vocal line with lyrics: "weibisches Za - gen, ängstliches Kla - gen wendet kein"

Piano accompaniment for the third system.

Vocal line with lyrics: "Elend macht dich nicht frei."

Piano accompaniment for the fourth system, ending with a final chord.

gewinn - ne und mit Rechten schaltet es ganz nach seinem Sinne.

Wambres, gegen solche Kahlheit du dich

streiben? Weibebwind und trocknen Kot lass sie drehn und

streiben, drehn und streiben.

Kümmert
Unbeschwert.

Wanders Jamütsrühe

vergrößert
mf

Über Nieder.

mf non legato *schon leicht*

früchtige niemand sich beklage, denn es ist das Kälteige,

was man dir auch sage

mf

mf (vergrößert)

In dem Schlichten waltetes sich zum Koch

p *mf*

LIUSE WORTHMANN - v. ROGOWSKI
Konzert- und Oratoriensängerin
Berlin - Wilmersdorf
Rudolstädterstr. 100

Quelle: Weisenlied zum Tanze.

ehres Erb, gemüthlich *mf.*

die gleichgültigen: } komm mit, o klöre komm mit mir zum Tanze! tanzen ge-
 lass sie nur leben & lass du nur tanzen! schmuckende

höret zum festlichen Tag mit du mein klöz mit, o komm du es mit den
 liebe ver- meidet den Tanz. klängen wir frohlich den schellen Reigen

weis du es nimmer, so tanzen wir doch komm mit o klöre komm mit mir zum
 nkleiden die andern zum sämmernden Wald lass sie nur leben, & lass die nur

Tanzen! Tanzen vor-konkisch den festli-chen Tag. die Färstlichen:
 tanzen! schmuckende liebe ver- meidet den Tanz.

traingendes

mf.

ohne dich liebste was wären die Fe- ste Oh- ne dich hi-ne was
 kann sie sich be- lie- ßen + lass tu uns wan- deln, wandeln der liebe ist

wa- re der Tanz? wann tu mich klag nich, + wickel ich nicht tanzen
 himmlisches Tanz. Amor, der nahe, der höret sie spotten

ven. *f* *mf*

bleibst tu es im- mer ist he- ßen ein Fest ohne dich liebste was
 rän dich nicht ein- mal, + wickel dich bald kann sie sich drehen, +

1

wa- re die Feste? Oh- ne dich hi-ne was wa- re der Tanz?
 lass tu uns wandeln, wandeln der lie- be ist himmlischer Tanz.

Handwritten musical score, first system. It consists of three staves. The top staff is a single treble clef staff with a key signature of three sharps (F#, C#, G#) and contains several measures of whole rests. The middle and bottom staves are grouped by a brace on the left and represent a piano accompaniment. The middle staff has a treble clef and contains a melodic line with eighth and sixteenth notes, including a slur and a fermata. The bottom staff has a bass clef and contains a bass line with chords and notes, including a fermata. A *rit.* (ritardando) marking is present in the third measure of the bottom staff. The system concludes with a double bar line and a final chord in the piano part.

Handwritten musical score, second system. It consists of three staves. The top staff is a single treble clef staff with a key signature of three sharps (F#, C#, G#) and contains several measures of whole rests. The middle and bottom staves are grouped by a brace on the left and represent a piano accompaniment. The middle staff has a treble clef and contains a melodic line with eighth and sixteenth notes, including a slur and a fermata. The bottom staff has a bass clef and contains a bass line with chords and notes, including a fermata. The system concludes with a double bar line and a final chord in the piano part.

Handwritten musical score, third system. It consists of three staves. The top staff is a single treble clef staff with a key signature of three sharps (F#, C#, G#) and contains several measures of whole rests. The middle and bottom staves are grouped by a brace on the left and represent a piano accompaniment. The middle staff has a treble clef and contains a melodic line with eighth and sixteenth notes, including a slur and a fermata. The bottom staff has a bass clef and contains a bass line with chords and notes, including a fermata. The system concludes with a double bar line and a final chord in the piano part.

Handwritten musical score, fourth system. It consists of three empty staves, indicating the end of the page or a section.

29

Goethe : Kläpper

1 M.

Entkommen draufzu.

mf

wir rei-ten in die

mf *klar markiert*

Kreuz und Quer nach Freu-den und Geschäften;

mf

doch immer Keiße es hin-ter her und

mf

billt aus allen b Kräfte *so*

mf

2/8

— will er Spitze aus im-tern Stall ins im-merfort be-

mf

cresc

gleiten,

und seines Mellens

cresc

läu-ter Schall be-weist mir, das wir reiten;

cresc

seines Mellens läu-ter Schall beweist mir,

das wir rei-ten.

cresc

cresc

707

Handwritten musical notation on a grand staff. The upper staff contains a vocal line with lyrics "c f i g u r a u i h e". The lower staves contain piano accompaniment. A dynamic marking "p" is visible in the first measure of the piano part.

Handwritten musical notation on a grand staff. The upper staff contains a vocal line with lyrics "a y l e d". The lower staves contain piano accompaniment.

Handwritten musical notation on a grand staff. The upper staff contains a vocal line. The lower staves contain piano accompaniment.

Handwritten musical notation on a grand staff. The upper staff contains a vocal line. The lower staves contain piano accompaniment.

Handwritten musical notation on a grand staff. The upper staff contains a vocal line with lyrics "d e u s p a t e r u s q u e". The lower staves contain piano accompaniment.

Handwritten musical notation on a grand staff. The upper staff contains a vocal line. The lower staves contain piano accompaniment.

Handwritten musical notation on a grand staff. The upper staff contains a vocal line. The lower staves contain piano accompaniment.

Handwritten musical notation on a grand staff. The upper staff contains a vocal line with lyrics "d e u s p a t e r u s q u e". The lower staves contain piano accompaniment.

Handwritten musical notation on a grand staff. The upper staff contains a vocal line. The lower staves contain piano accompaniment.

Handwritten musical notation on a grand staff. The upper staff contains a vocal line with lyrics "d e u s p a t e r u s q u e". The lower staves contain piano accompaniment.