

Scherzhaftlich bewegt

The first system shows the piano introduction. It consists of two staves: a treble clef staff and a bass clef staff. The key signature is three flats (B-flat, E-flat, A-flat) and the time signature is 6/8. The music begins with a series of chords in the right hand and a simple bass line in the left hand. A dynamic marking of *f* (forte) is present at the beginning.

The second system contains the first two lines of the song. The top staff is the vocal line, and the bottom two staves are the piano accompaniment. The lyrics are: "Dass du mich liebst, das wüsst' ich, ich hatt' es längst entdeckt,". The piano accompaniment features a steady eighth-note bass line and chords in the right hand. A dynamic marking of *f* is at the start.

The third system contains the next two lines of the song. The top staff is the vocal line, and the bottom two staves are the piano accompaniment. The lyrics are: "doch als du mirs gestan — den, hat es mich tief erschreckt." The piano accompaniment continues with similar rhythmic patterns.

The fourth system contains the final line of the song. The top staff is the vocal line, and the bottom two staves are the piano accompaniment. The lyrics are: "Ich stieg wohl auf die Ber-ge und jubelte und". The piano accompaniment concludes with a series of chords. Dynamic markings include *mf* (mezzo-forte) and *resc* (ritardando) with a fermata over the final notes.

mp

mf *mf*

sang, ich ging aus Meer und weinte beim Sonnen unter-

The first system of the handwritten musical score. It features a vocal line on a single staff and a piano accompaniment on two staves. The key signature has two flats (B-flat and E-flat), and the time signature is 4/4. The vocal line begins with a fermata over a whole note, followed by a series of quarter and eighth notes. The piano accompaniment consists of chords in the right hand and a simple bass line in the left hand. There are dynamic markings *mp* and *mf*, and some phrasing slurs. The lyrics are written below the vocal line.

mf

mf

gang. Mein Meer ist wie die Sonne, so flamme und erzie-

The second system of the handwritten musical score. It continues the vocal line and piano accompaniment. The vocal line has a fermata over a whole note, followed by quarter and eighth notes. The piano accompaniment features more active chords and a bass line. Dynamic markings *mf* are present. The lyrics are written below the vocal line.

f

f

schn, und in ein Meer von Liebe verwickelt es gross und

The third system of the handwritten musical score. The vocal line continues with quarter and eighth notes. The piano accompaniment has a more complex texture with many chords. Dynamic markings *f* and tempo markings *allarg.* are present. The lyrics are written below the vocal line.

at

at

schön.

The fourth system of the handwritten musical score. The vocal line is mostly rests, with a few notes at the end. The piano accompaniment continues with chords and a bass line. Dynamic markings *at* are present. The lyrics are written below the vocal line.

13 Heine: Sommerabend

MM, I 262

Ruhig flüßend.

p

Dämmernd liegt der Sommer-a-bend über

p/p

wald und grünen wiesen, goldner mond am blauen himmel strahl her

unter düßig labend. An dem Bache zirpt die

p/p

grille und es regt sich in dem wasser, und der wandrer hört ein

2

Heine: Sommerabend

J. H. Wetzel

Frühig flüsternd.

Handwritten musical score for the first system. The vocal line is in G major (one sharp) and 4/4 time. The piano accompaniment is in the same key and time. The tempo/mood is marked *Frühig flüsternd.* The lyrics are: "Dämmernd liegt der". The piano part includes the instruction *pp legatissimo* and *(Dämpfung)*. There are some handwritten annotations above the piano part, possibly indicating fingerings or dynamics.

Handwritten musical score for the second system. The vocal line continues with the lyrics: "Sommerabend über Wald und grünen Wiesen, goldner". The piano accompaniment continues with chords and moving lines. The key signature remains G major.

Handwritten musical score for the third system. The vocal line continues with the lyrics: "Rond am blauen Himmelstrahlherunter Lüftig". The piano accompaniment continues with chords and moving lines. The key signature remains G major.

Handwritten musical score for the first system. It features a vocal line at the top and piano accompaniment below. The lyrics are: "liebend. An dem Bache nippt die". The music is in a key with four flats (B-flat major or D-flat minor) and a common time signature. Dynamics include *p* and *pp*. The piano part consists of chords and a moving bass line.

Handwritten musical score for the second system. The lyrics are: "Grille, und es regt sich in dem Wasser und der". The music continues in the same key and time signature. Dynamics include *pp*. The piano accompaniment features a more active bass line with eighth notes.

Handwritten musical score for the third system. The lyrics are: "Wandler hört ein Plätschern über sein Atzen in der Stille." The music concludes in the same key and time signature. Dynamics include *pp*. The piano part has a rhythmic pattern of eighth notes. A final measure contains a 3/2 time signature.

p
 Dorten an dem Bach ab — tai — ne badet
pp *legatissimo* *c*

sich die schöne El — fe, Arm und Hand weiß sind
mod. rit. *at.* $\frac{3}{2}$

lieblich schlürfen in dem Mondes schein

Keine Sommerabend

J. H. Wetzel

Sanft fließend. p

Dämmernd liegt der Sommerabend über

pp legatissimo

3
2

MA, I 262

Detailed description: This system contains the first two staves of the piece. The top staff is the vocal line, starting with a whole rest followed by a series of quarter notes. The bottom staff is the piano accompaniment, beginning with a piano introduction marked 'pp legatissimo'. The piano part features a mix of chords and moving lines, with a 3/2 time signature indicated. A handwritten 'MA, I 262' is written above the piano staff.

Wald und grünen Wiesen, goldener Mond am blauen

Detailed description: This system contains the second two staves. The vocal line continues with quarter notes. The piano accompaniment provides harmonic support with chords and some melodic fragments. The key signature remains three flats (B-flat major/C minor).

Himmel strahlt herunter süßig Abend.

pp

Detailed description: This system contains the final two staves. The vocal line concludes with a long note. The piano accompaniment ends with a final chord and a few notes in the bass line. A 'pp' marking is present above the piano staff.

p

An dem Bache ziert die Grille und es

pp

regt sich in dem Wasser, und der Wanderer hört ein

Plätschern und ein Atmen in der Stille

rit.

$\frac{3}{2}$

forte

Dort an dem Bach ab- tei- ne ba- det

pp *legatissimo*

sich die schö- ne El- fe, um und Na- den weiß und

poco rit *at.*

Lieblieh schürren in dem Nandenschne

M, I 262

21

Heine
2 Sommerabend

2 Heine: Sommerabend

J.H. Wetzel

Ruhig flüßend.

Musical score for the first system of "Sommerabend" by Heine. It consists of three staves. The top staff is the vocal line in G major, starting with a whole rest followed by a half note G4, a quarter note A4, and a quarter note B4. The middle staff is the piano accompaniment, starting with a whole rest followed by a half note G3, a quarter note A3, and a quarter note B3. The bottom staff is the bass line, starting with a whole rest followed by a half note G2, a quarter note A2, and a quarter note B2. The tempo/mood is "Ruhig flüßend." The dynamic is "pp legatissimo". The text "Dämmernd liegt der" is written above the piano accompaniment. The piece ends with a fermata over a G chord.

Musical score for the second system of "Sommerabend" by Heine. It consists of three staves. The top staff is the vocal line, starting with a quarter note G4, a quarter note A4, a quarter note B4, a quarter note C5, a quarter note B4, a quarter note A4, a quarter note G4, a quarter note F4, and a quarter note E4. The middle staff is the piano accompaniment, starting with a quarter note G3, a quarter note A3, a quarter note B3, a quarter note C4, a quarter note B3, a quarter note A3, a quarter note G3, a quarter note F3, and a quarter note E3. The bottom staff is the bass line, starting with a quarter note G2, a quarter note A2, a quarter note B2, a quarter note C3, a quarter note B2, a quarter note A2, a quarter note G2, a quarter note F2, and a quarter note E2. The text "Sommerabend über Wald und grünen Wiesen, goldner" is written above the piano accompaniment.

Musical score for the third system of "Sommerabend" by Heine. It consists of three staves. The top staff is the vocal line, starting with a quarter note D4, a quarter note E4, a quarter note F4, a quarter note G4, a quarter note A4, a quarter note B4, a quarter note C5, a quarter note B4, a quarter note A4, and a quarter note G4. The middle staff is the piano accompaniment, starting with a quarter note G3, a quarter note A3, a quarter note B3, a quarter note C4, a quarter note B3, a quarter note A3, a quarter note G3, a quarter note F3, and a quarter note E3. The bottom staff is the bass line, starting with a quarter note G2, a quarter note A2, a quarter note B2, a quarter note C3, a quarter note B2, a quarter note A2, a quarter note G2, a quarter note F2, and a quarter note E2. The text "Mond am blauen Himmel strahlte run-ter lüftig" is written above the piano accompaniment.

Handwritten musical score for the first system. It consists of three staves: a vocal line at the top, a piano accompaniment in the middle, and a bass line at the bottom. The key signature is three flats (B-flat, E-flat, A-flat). The tempo/mood is marked "Andend." (Andante). The lyrics are: "An dem Bache nipft die". There are dynamic markings "p" (piano) and "pp" (pianissimo) in the score.

Handwritten musical score for the second system. It consists of three staves: a vocal line at the top, a piano accompaniment in the middle, and a bass line at the bottom. The key signature is three flats. The lyrics are: "Stille, und es legt sich in dem Wasser und der". There are dynamic markings "pp" in the score.

Handwritten musical score for the third system. It consists of three staves: a vocal line at the top, a piano accompaniment in the middle, and a bass line at the bottom. The key signature is three flats. The lyrics are: "Wandler hört ein Plätschern und ein Atmen in der Stille." There are dynamic markings "pp" in the score. At the end of the system, there are markings "3" and "2" indicating a 3/2 time signature.

pp

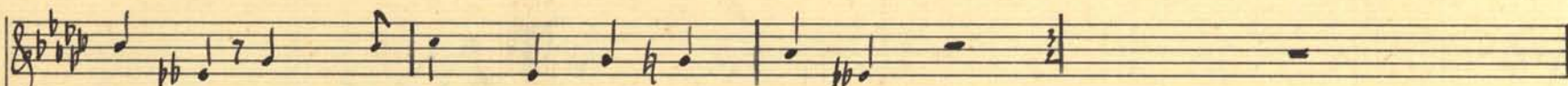
pp *legatissimo*

Dortem an dem Bachal - tai - ne badest

sich die schön ne El - fe, Arm und Hand weiß sind

pp rit. at.

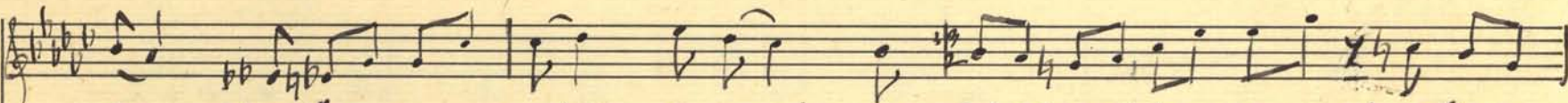
lieblich schimmernd in dem Mondescheine



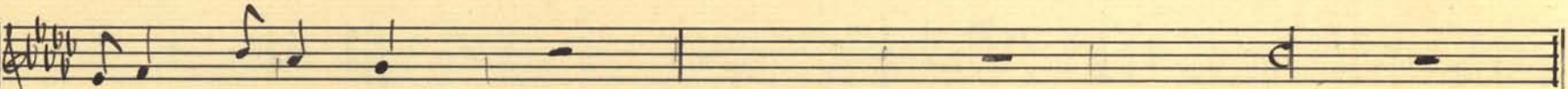
Plätzchen und ein Stämmen in der Stille.



Dorten an dem Bach al- lei- ne ba- del sich die schö- nne



El- fe, Arm und Na- chter weiss und lieblich schin- mer in dem



Frondeusheine.

