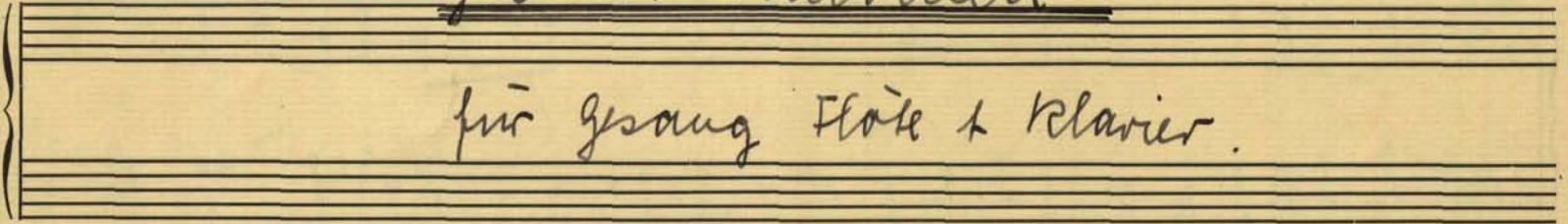


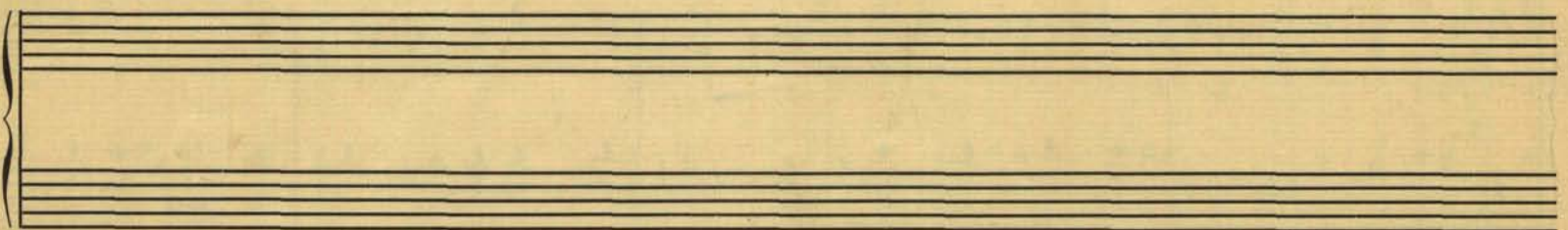


Goethe: Philomela

für Gesang Flöte + Klavier.



J. H. Wetzel.



Tändelied + silberachtent

Flöte

Saxophon

Klavier

Flute: Treble clef, key signature of three sharps (F#, C#, G#), 8/8 time signature. Melody starts with a quarter rest, followed by eighth notes: G4, A4, B4, C5, B4, A4, G4, F#4, E4, D4.

Saxophone: Treble clef, key signature of three sharps, 6/8 time signature. Rest for the first two measures, then eighth notes: G4, A4, B4, C5, B4, A4, G4, F#4, E4, D4.

Piano: Treble and Bass clefs, key signature of three sharps, 6/8 time signature. Treble part: quarter notes G4, A4, B4, C5, B4, A4, G4, F#4, E4, D4. Bass part: quarter notes G3, A3, B3, C4, B3, A3, G3, F#3, E3, D3.

Lyrics: Nik hat Amor ge-wiss — 0

Flute: Treble clef, key signature of three sharps, 8/8 time signature. Melody continues with eighth notes: C5, B4, A4, G4, F#4, E4, D4, C4, B3, A3, G3, F#3, E3, D3.

Saxophone: Treble clef, key signature of three sharps, 8/8 time signature. Melody continues with eighth notes: C5, B4, A4, G4, F#4, E4, D4, C4, B3, A3, G3, F#3, E3, D3.

Piano: Treble and Bass clefs, key signature of three sharps, 8/8 time signature. Treble part: quarter notes G4, A4, B4, C5, B4, A4, G4, F#4, E4, D4. Bass part: quarter notes G3, A3, B3, C4, B3, A3, G3, F#3, E3, D3.

Lyrics: Sän gerin füttsand er-zo-gen; Rindiel reichte der Gott dir mit dem

Flute: Treble clef, key signature of three sharps, 8/8 time signature. Melody continues with eighth notes: C5, B4, A4, G4, F#4, E4, D4, C4, B3, A3, G3, F#3, E3, D3.

Saxophone: Treble clef, key signature of three sharps, 8/8 time signature. Melody continues with eighth notes: C5, B4, A4, G4, F#4, E4, D4, C4, B3, A3, G3, F#3, E3, D3.

Piano: Treble and Bass clefs, key signature of three sharps, 8/8 time signature. Treble part: quarter notes G4, A4, B4, C5, B4, A4, G4, F#4, E4, D4. Bass part: quarter notes G3, A3, B3, C4, B3, A3, G3, F#3, E3, D3.

Lyrics: Pflē - le die Kost so Hochdringen vom Gift - die

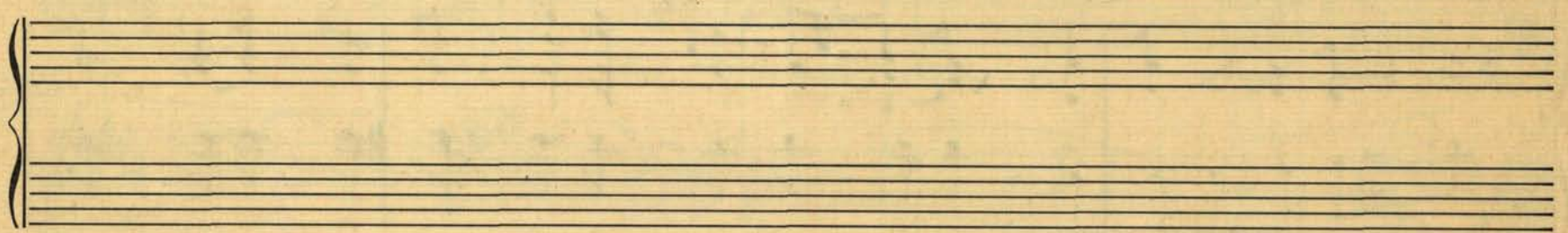
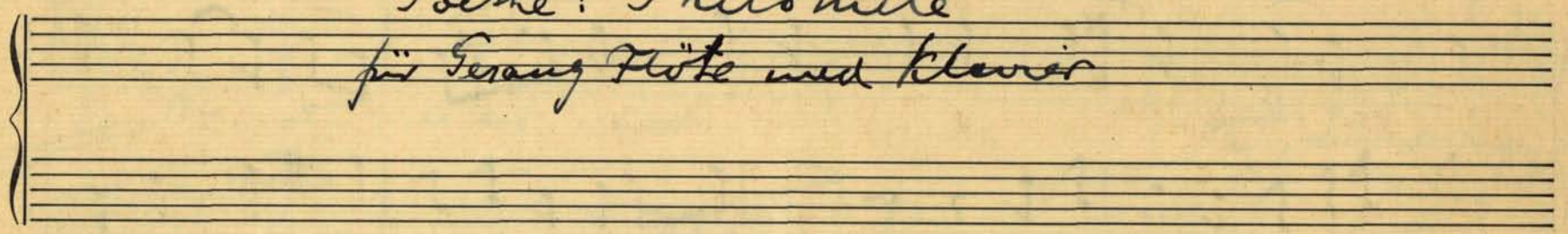
harmlos atmeude Beh - le trifft mit der Liebe Ge - walt - nun

- Ohlonele das Herz - - ! Ich hat Amor ge - wis

Sain gouin füllwunderzagen



Goethe: Philomela
für Gesang Flöte und Klavier



Fädelnd und schmückend.
p dolce e legato

Flöte

Sopran

Klavier

Du hast Amorgewiss

p dolce

Sängerin füllend erzogen;

Kindheit reichte der Gott dir mit dem

Pfeil — le die Kost.

So, durchdringen vom Gift — die

Philomèle .

AM, I 175

Tändelied u. Scherzstück

p dolce elegans

Flöte

Sung

clavier

Du hast Amor gewiss

Sängerin füllend erzogen

kindlich reichle der Gotte dir und dem

Phile le die kost.

so durchdringen von

Gift die barmlos atmende Reh-le trifft mit der Liebe

wall mir Philomèle der Herz Du hast Amorge

pp.

riten.
o Sängerin füllend erzogen.

harmlos atmende Rehele, kiff mit erbliche Gewalt ein

- Philo-mele das Herz; die hat hervor gewess,

Säugerin füllend erzogen.

J. H. Wetzel

Goethe: Frühzeitiger Frühling

Sehr frisch und heiter

Klar.
A

Gesg

Klar.

mf

mf

Tage der warmen Komkehr so bald? Heut nur die

mf

Sonne Hügel und Wald? Heißlicher fließen Bächlein zumal, sind es die

p

Wiesen, ist es das Tal? Blauliche Triebe

p leggiero

MM, I 177

p leggiero
MM, I 177

Andante

177, I 177

Himmel in Höh! goldene Fische schweben in der See; bräutes Gefilde - der

rauschet im Meer; himmlische Liebe schallen da - rein. Unter der

Grün-herblühender Kraft wachsen die Birnen süßend am Saft.

pp *tr* *tr* *tr*

p

Leise Bewegung hebt in der Luft, reizende

pp molto legato

rit *rit* *at. mf*

rit. *at f*

Regung schlängelnder Luft. Kächiger rührt belsich ein

mf at

pp stentando

p stentando *ruhiger*

Heiß, doch er verlieh - res gleich sich im Strahl. Aber zum

pp stentando *ruhiger*

pp *accelerando*

Buren kehlet er zurück;
helft mir ihr Küssen
tragen das

pp *accelerando*

Detailed description: This system contains the first three measures of a handwritten musical score. It features a vocal line at the top and a piano accompaniment below. The key signature has two sharps (F# and C#), and the time signature is 4/4. The vocal line begins with a rest followed by a series of eighth and sixteenth notes. The piano part consists of chords and moving lines in both hands. Dynamic markings include *pp* (pianissimo) and *accelerando*. The lyrics are written in German and Italian.

mf

Glück!
saget mir ges-tes wie mir ges-schah, Liebliche

mf

Detailed description: This system contains the next three measures of the musical score. The vocal line continues with similar rhythmic patterns. The piano accompaniment provides harmonic support. The dynamic marking *mf* (mezzo-forte) is present. The lyrics continue in German and Italian.

p *piu mosso* *mf*

Schwester! Liebchen ist da
piu mosso *mf*

Detailed description: This system contains the final three measures of the musical score on this page. The tempo marking *piu mosso* (faster) is indicated. The dynamic marking *mf* is also present. The vocal line concludes with a few notes, and the piano part continues with chords and moving lines.

Handwritten musical score for the first system. It consists of three staves: a vocal line in treble clef and a piano accompaniment in grand staff (treble and bass clefs). The key signature has two sharps (F# and C#), and the time signature is 4/4. The lyrics under the vocal line are: "Liebliche Schwester Liebchen ist da, Liebchen ist".

Handwritten musical score for the second system. It consists of three staves: a vocal line in treble clef and a piano accompaniment in grand staff. The lyrics under the vocal line are: "da! Liebchen ist". Above the first measure of the vocal line is the instruction "crescendo". Above the second measure of the piano accompaniment is the instruction "stringendo".

Handwritten musical score for the third system. It consists of three staves: a vocal line in treble clef and a piano accompaniment in grand staff. The lyrics under the vocal line are: "da!". Above the first measure of the vocal line is the instruction "mf cresc". Above the first measure of the piano accompaniment is the instruction "stringendo e crescendo".